

LED OVAL DRIVING LAMP WITH AMBER OR CLEAR LED POSITION LIGHT

PART NO.: 1001-1650



www.boremanltd.com

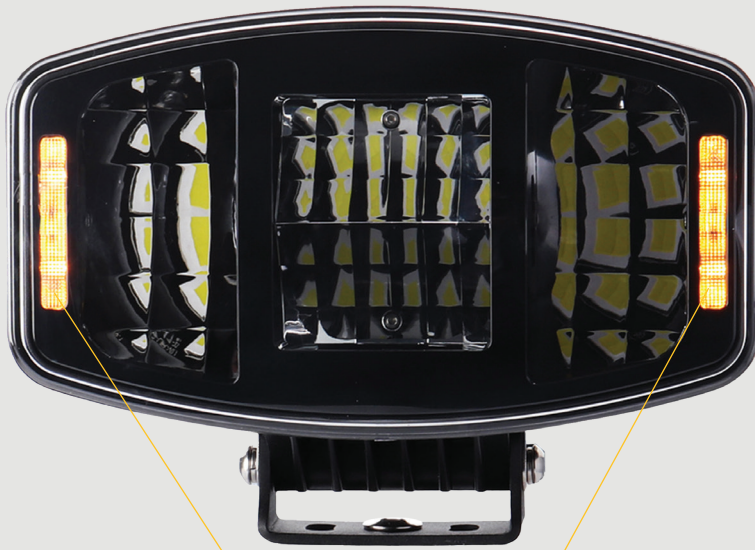
Powder Coated Die Cast Aluminium



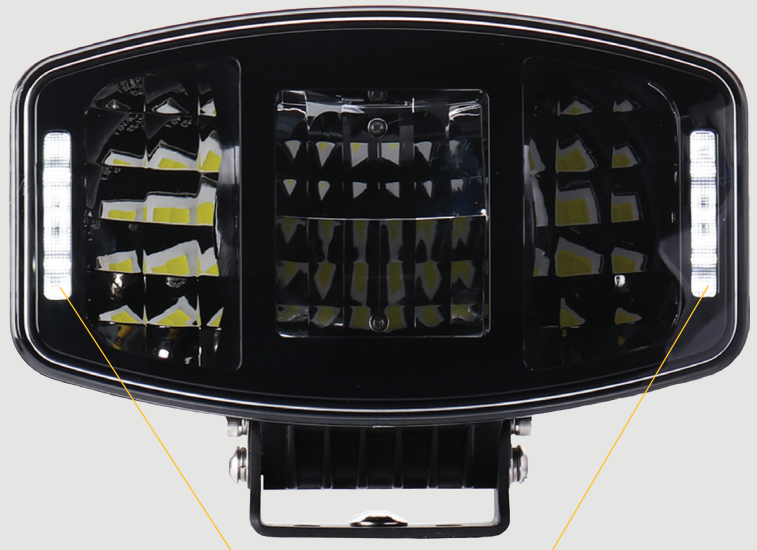
Position Light

Product Features:

- 4pcs x 25 LED's
- Volts: 9-36V
- Colour Temperature: 6000K
- Dual Voltage: 12V & 24V
- Lumens: 10000lm
- Housing: Powder Coated Die Cast Aluminium
- Lens Material: Polycarbonate
- IP69K: High Pressure Water Spray Resistant
- Stainless Steel Mounting Bracket
- Electronic Thermal Management (ETM)
- Anti Rust/Corrosion/Freezing Resistance
- ECE R112/R10/R7
- Connector: DT Connector
- Temperature Range:-40°C ~+60°C
- Current Draw: 6.5amps@12v and 3.3amps@24v
- Life Span: 50,000+ hours
- 2 Year Warranty
- Weight: 1.8kg



Amber Position Light



Clear Position Light

Information:



Part No.:	Beam Pattern:	Position Light:	Supply:	Mounting Bracket:	Lumens:	Life Span:
1001-1650	Driving Light	Amber/Clear	12V & 24V Dual Voltage	Stainless Steel Bracket	10,000	50,000+ Hours



Available from your nearest dealer

www.boremanltd.com | info@boremanltd.com | Tel: +353 49 4367049

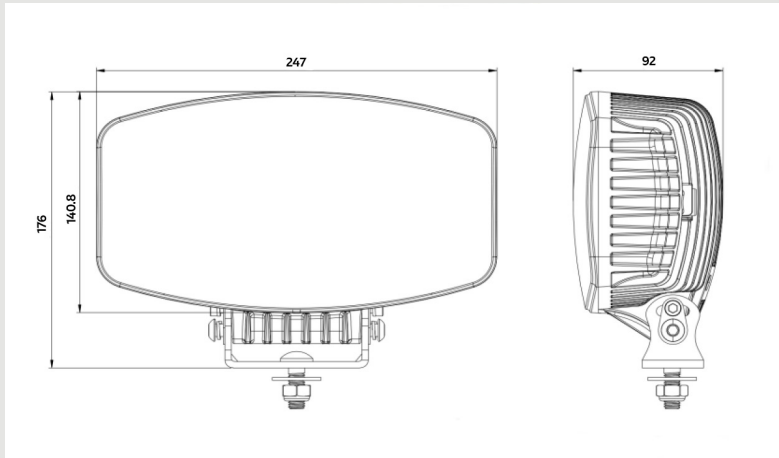
LED OVAL DRIVING LAMP WITH AMBER OR CLEAR LED POSITION LIGHT

PART NO.: 1001-1650

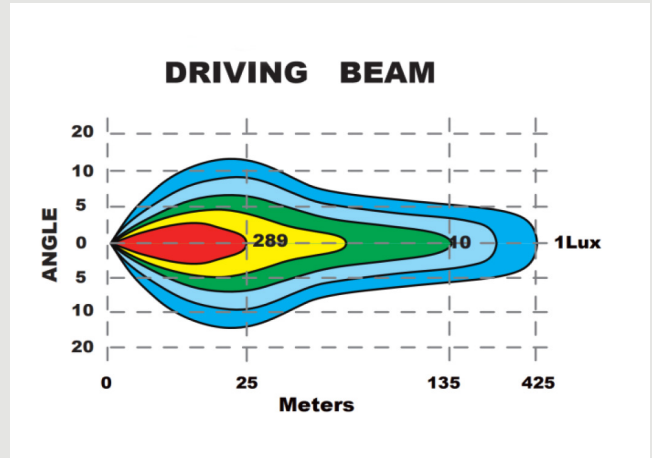


www.boremanltd.com

Dimensions:



Beam Pattern:



Wiring Protocol:

